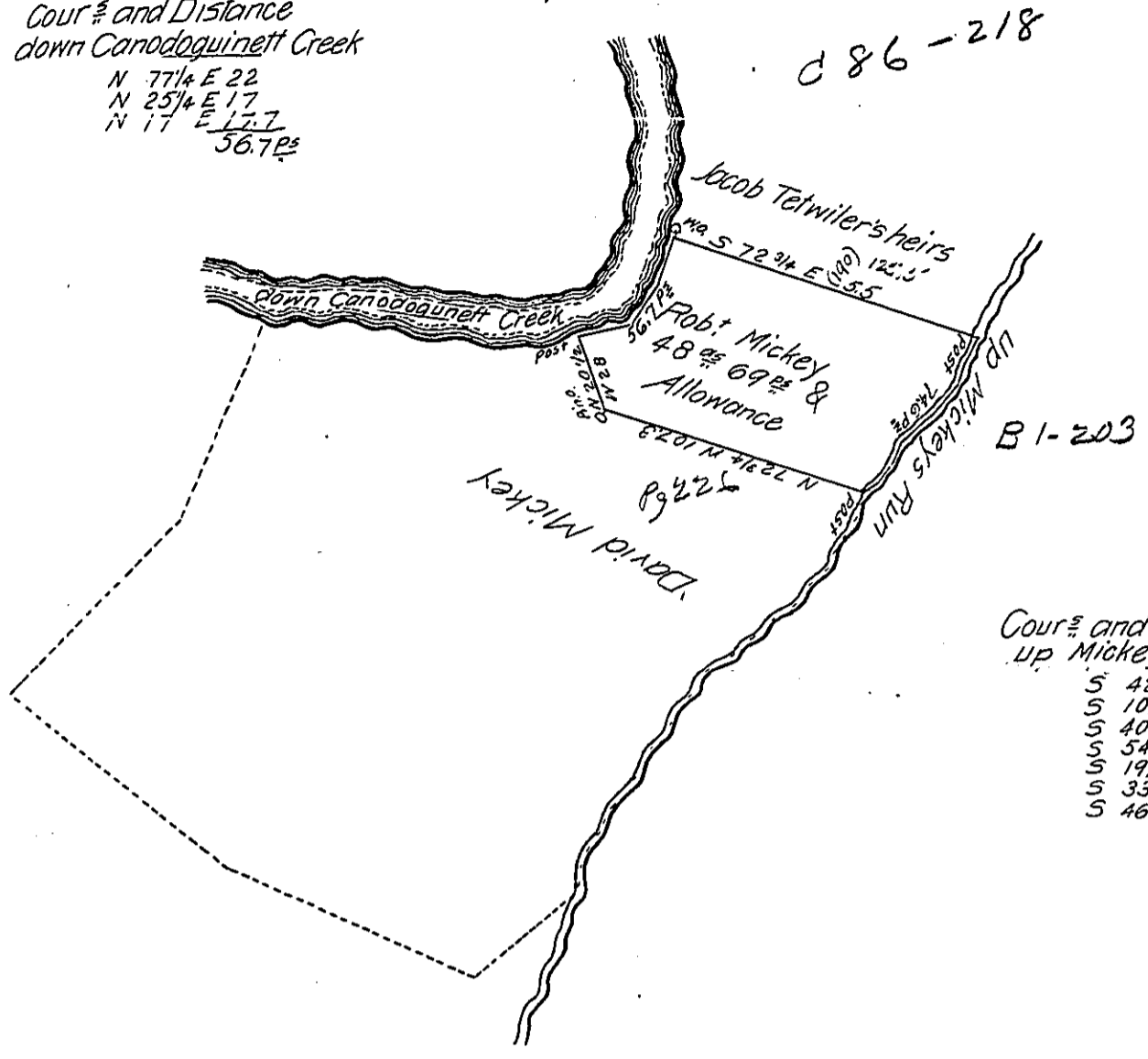


Courses and Distance  
down Canodoguinett Creek

N 77 1/4 E 22  
N 25 1/4 E 17  
N 17 E 17.7  
56.7 P<sup>s</sup>



Courses and Distance  
up Mickey's Run

S 42 W 13  
S 10 1/4 W 7  
S 40 3/4 W 18  
S 54 1/2 W 13  
S 19 1/2 W 10  
S 33 1/4 W 8  
S 46 1/2 W 5.6  
74.6 P<sup>s</sup>

Draught of a Tract of Land situate in Newton township Cumberland County Containing forty eight Acres & sixty nine perches & Allowance of six P<sup>s</sup> C<sup>t</sup> for Roads &c It being part of 2<sup>d</sup> & Allowance, Surv<sup>d</sup> In pursuance of a Warrant granted to Robert Mickey dated 12<sup>th</sup> May Anno Domini 1763 Surv<sup>d</sup> & divided April 25<sup>th</sup> ADom 1822.

Saml. Ruby

D.S.

To Samuel Cochran Esquire  
Surveyor General

IN TESTIMONY that the above is a copy of the original remaining on file in the Department of Internal Affairs of Pennsylvania, made conformably to an Act of Assembly approved the 16th day of February, 1833, I have hereunto set my Hand and caused the Seal of said Department to be affixed at Harrisburg, this twenty-sixth day of January 1906

*Grace B. Brown*  
Secretary of Internal Affairs.